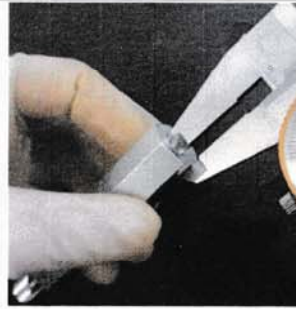
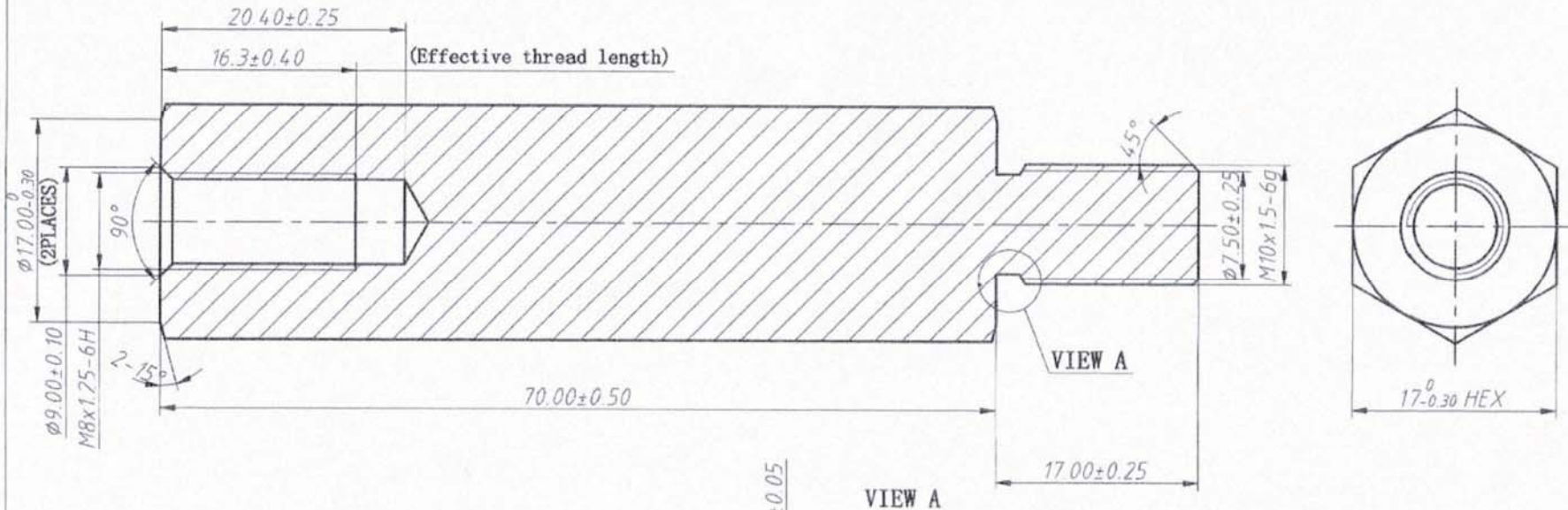


Note 1,
Measure the thickness from the top of M8 internal thread to the every hexagon surface, as shown in the picture. The difference between the maximum and the minimum of the six thicknesses needs to be within 0.40mm.

注1,
按图测量M8内螺纹顶端至每个六角面的距离，其中最大与最小之差不能大于0.4mm。

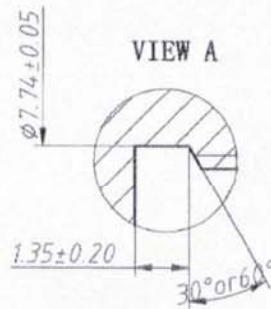


REV 更改号	DATE 日期	REVISION DETAILS 更改内容	APPD 审核并批准
A	Aug. 27, 2020	Production issue	
B	Nov. 28, 2022	Add Note 1.	



UNLESS SPECIFIED
ALL DIMENSIONS IN mm,
MACHINED SURFACES Ra=3.2um,
ANGLE TOLERANCES ±5°,
Other tolerance except angles,
in accordance with
GB/T1804-2000(ISO2768-1)-m
and GB/T1184-1996(ISO2768-2)-m

其它事项,
图示尺寸单位为mm,
未注机加工表面粗糙度 Ra=3.2um,
未注角度公差 ±5°,
其它未注公差 (除角度外) 均按:
GB/T1804-2000(ISO2768-1)-m 和
GB/T1184-1996(ISO2768-2)-m



Zhejiang Gaocheng Autoparts Co.,Ltd

PART No 41454-STR-M10-M8
零件名

SCALE: APPD: 余德胜
批准 制图 2020.08.27
DATE: 詹永斌
日期 审核 2020.08.27

MATERIAL Chinese steel 45

材质 45#

FINISH Remove all sharp edges, burrs, slivers and swarf, break all edges 0.127-0.254mm.
ZINC PLATING WITH 8um MICRONS MINIMUM PLATING THICKNESS AND TRIVALENT CHROMATE PASSIVATION
AND WITH 5-AND 95 HRS TO WHITE / 144 HS TO RED RUST IN SALT SPRAY TEST.

去除所有毛刺、铁屑等残屑物，锐边倒钝0.127-0.254mm。
镀锌，三价铬钝化，银白色，盐雾试验96小时无白斑，144小时无红锈，镀锌层厚度大于8um。